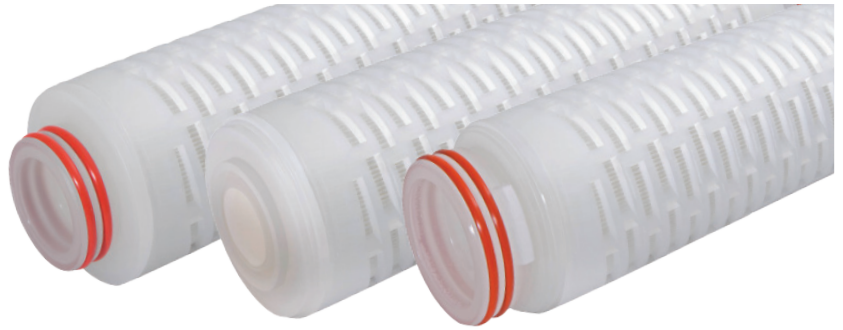
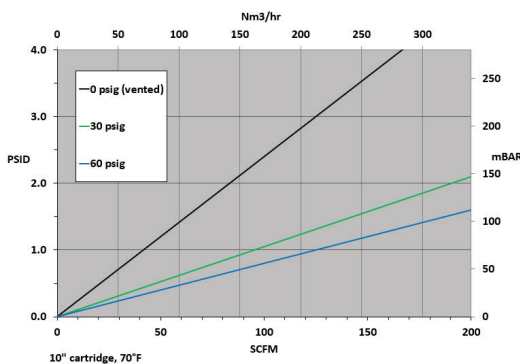


PPTFE-Series Pharmaceutical Grade PTFE

PPTFE-Series High Purity Pharmaceutical Grade PTFE Filter Cartridges, with expanded polytetrafluoroethylene (PTFE) membrane, provide optimized filtration performance in sterile air/gas filtration and venting applications. The single layer PTFE membrane, with over twice the hydrophobicity of polypropylene or PVDF, is the best choice to prevent water intrusion and resulting microbial growth. Each PPTFE cartridge is integrity tested during manufacturing and is supported by a validation guide for regulatory compliance. PPTFE elements are fully validated as sterilizing grade filters in liquids in accordance with HIMA and ASTM F838-05 guidelines and in gases through full retention of the MS2 phage in an aerosol challenge. Manufactured in a clean-room environment to maintain high standards of purity and cleanliness.



Flow Rate vs Pressure Drop



Typical Applications

- Sterile gas filtration of fermentor inlets
- Off-gassing downstream of fermentors and bioreactors
- Autoclave vent filters
- WFI tank vents
- Sterile air supply for service gases (i.e. filling lines in blow-fill-seal systems)

Construction Materials

Membrane.....PTFE
Prefiltration Media.....Polypropylene
Support Layers.....Polypropylene
Cage/Core/Adapters.....Polypropylene
Seals.....Buna, EPDM, Silicone, Viton®, Teflon® Encapsulated Silicone

Note: O-ring adapters include integral reinforcement that will not deform with repeated steam sterilization or hot water sanitation cycles.

Toxicity

All polypropylene components meet the specifications for biological safety per USP Class VI – 121°C for plastics.

Dimensions

Length:

5 to 40 inches (12.7 to 101.6 cm) nominal

Outside Diameter:

2.78 inches (7.06 cm) nominal

Sanitization/Sterilization

Steam Sterilization.....134°C, 30 min., max. 7 PSID, 150 cycles

Hot Water.....85°- 95°C, 30 min., max. 7 PSID

Operating Conditions

Change Out ΔP (recommended).....35 PSID

Temperature (max).....248°F (120°C)

Differential Pressure (max)......72 PSID (5.0 bar) at 68°F (20°C)

Food Safety Compliance

Materials of construction comply with FDA regulations for food and beverage contact use as detailed in the US Code of Federal Regulations, 21CFR. Materials used to produce filter media and hardware are deemed safe for use in contact with foodstuffs in accordance with EU Directives 2002/72/EC, 1935/2004, and/or 10/2011.

Ordering Information

PPTFE	Rating (μ)	A	Length	C	End Cap Style	O-Rings/Gaskets
	0.2		5" (12.7 cm)		2 = DOE Flat Gasket	B = Buna
			10" (25.4 cm)		3 = 222 w/ Fin	E = EPDM
			20" (50.8 cm)		4 = 222 w/ Flat Cap	S = Silicone
			30" (76.2 cm)		6 = 226 w/ Flat Cap	T = Teflon® Encapsulated Viton®
			40" (101.6 cm)		7 = 226 w/ Fin	V = Viton®
					28 = 222 3-tabs w/ Fin	Z = Teflon® Encapsulated Silicone

DISCLAIMER: Filtration data presented is representative of performance observed in controlled laboratory testing. It is not given as a warranty, specification or statement of fitness for use. Specific performance can vary widely depending on contaminant type, fluid properties, flow rates and environmental conditions. It is recommended that users conduct thorough qualification testing to assure the product functions as required. For additional technical support, a product Validation Guide is available upon request.

DS_PPTFE_190918